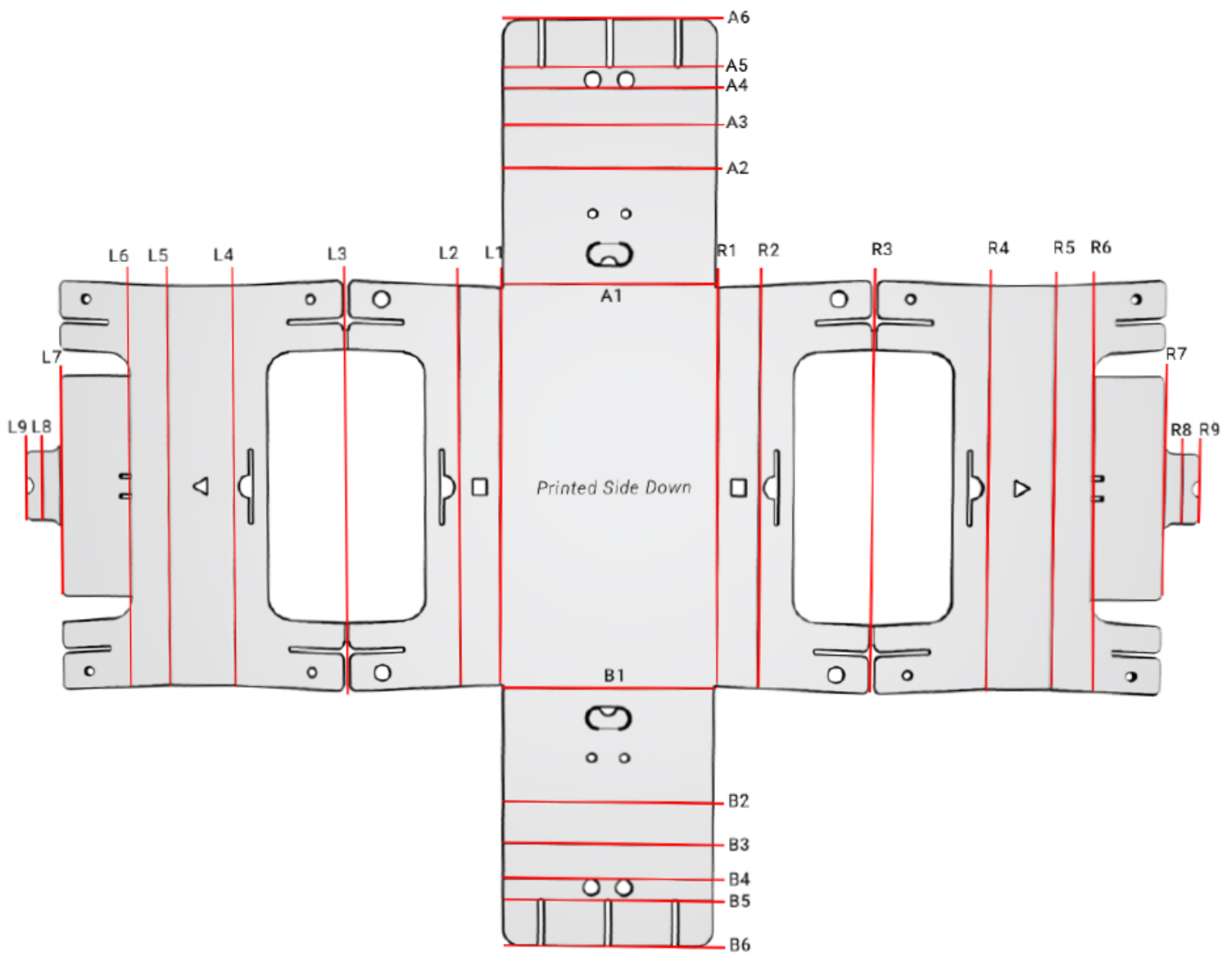




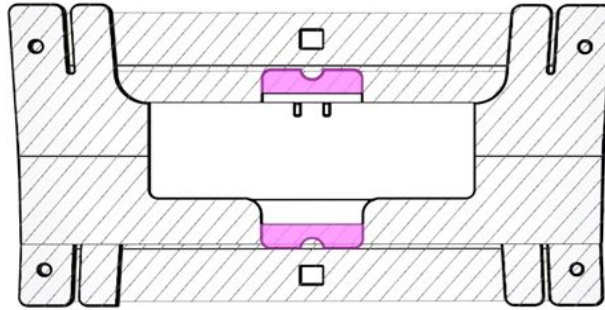
## Getting to Know Your Product





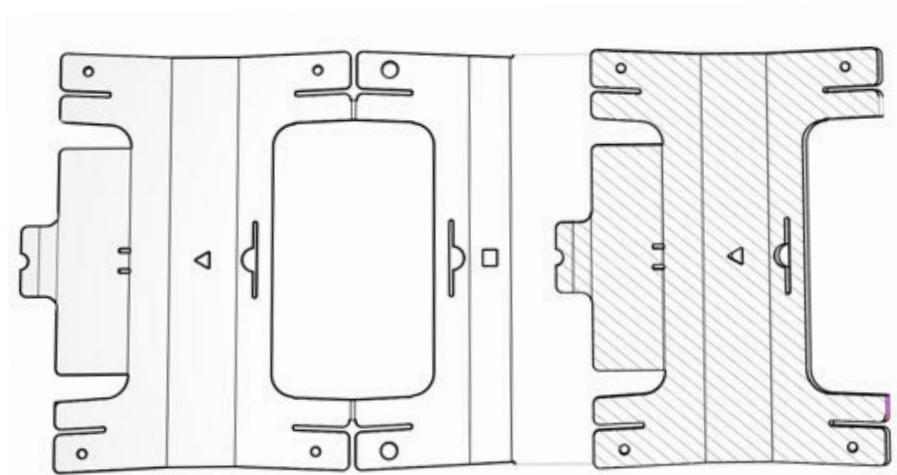
DESK UP

# INSTRUCTIONS



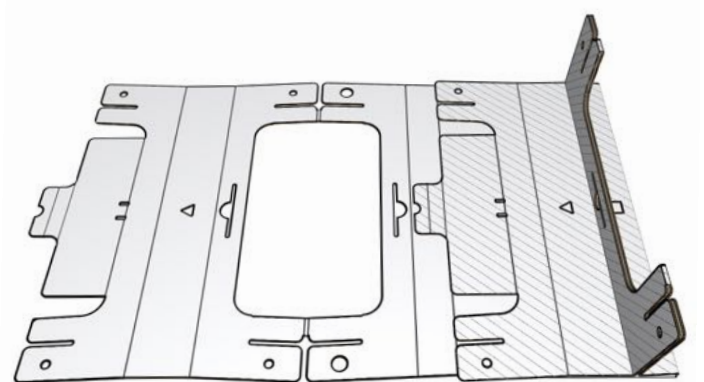
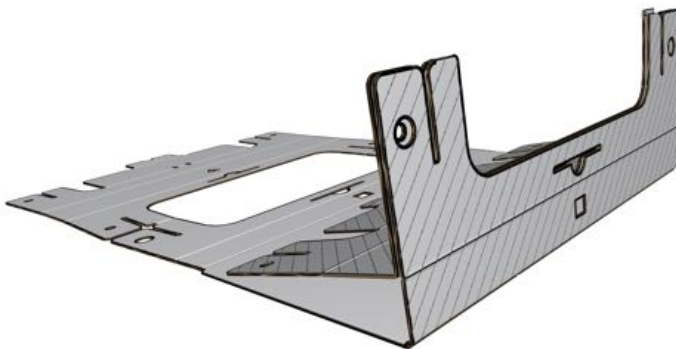
1. Remove from packaging, pull red tabs to open entire table as on pg 1.

---



2. Let's start with the right side. Fold the flap along crease R3, towards the left so that the circles meet and the bigger circle is outside.

---



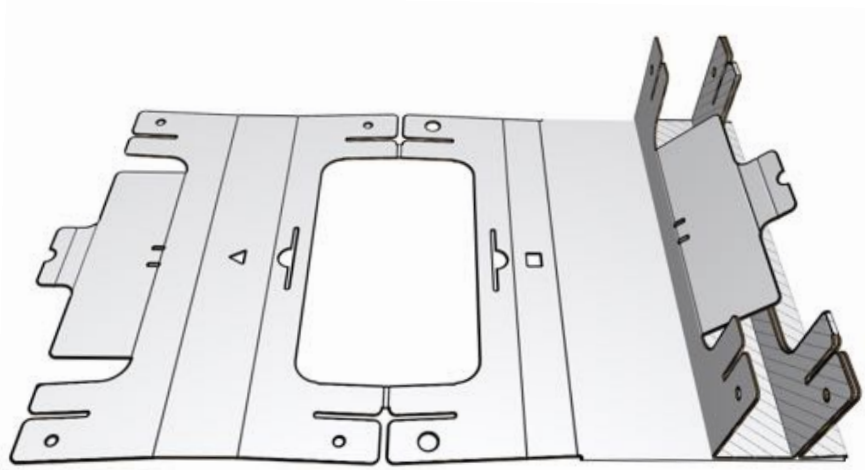
3. Lift flap1 and press down so that the flap is perpendicular to the ground and R2 and R4 touch the ground. Make sure that the square between R1 & R2 is visible and flat on the ground.

---



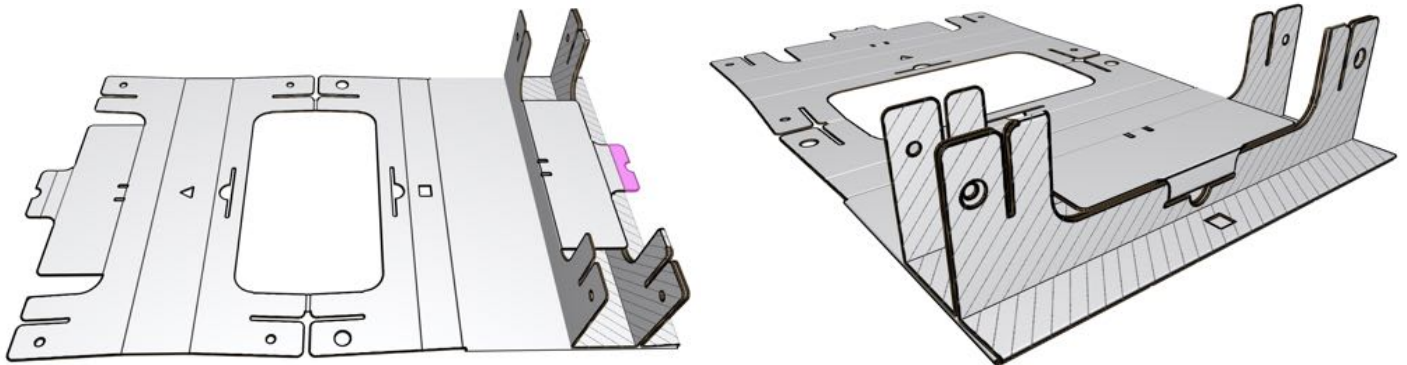
DESK UP

## INSTRUCTIONS



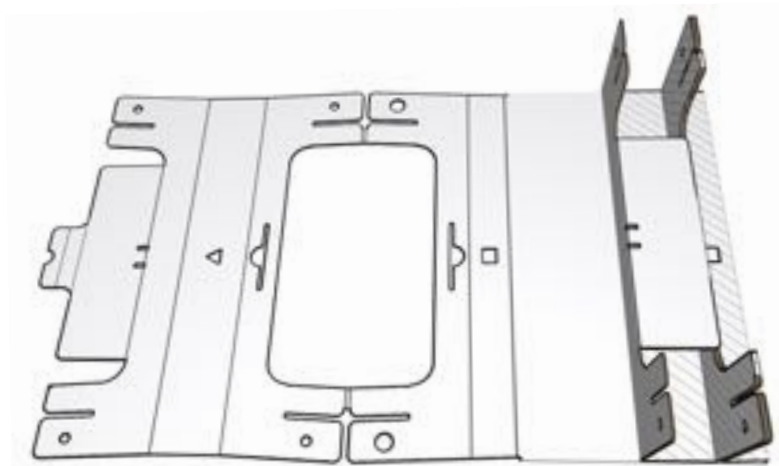
4. Now fold along crease R5 such that the flap 2 is perpendicular to the ground.

---



5. Lastly, fold the centerpiece along R6 towards the right and insert flap in the slit. You may have to hold flap 1 down firmly in order to insert the flap 3 into the slit

---



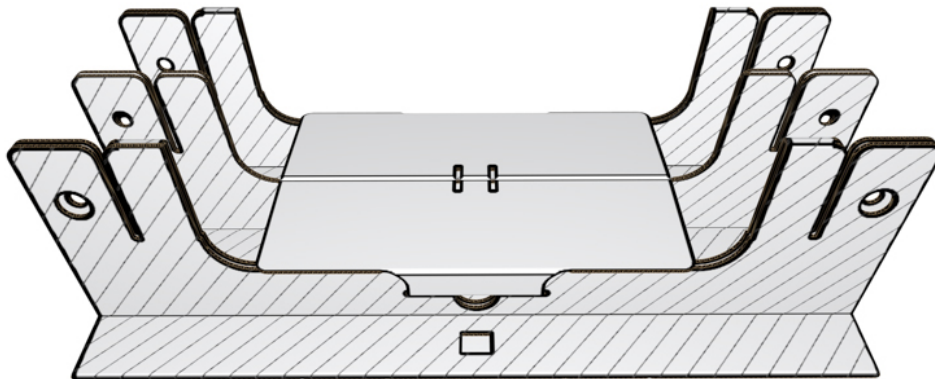
6. For the other side repeat steps from 3-6. (Make sure that the two (left & right) center flaps are completely touching each other) don't worry if the shapes are not staying flat on the ground without force. The next step will solve this problem.

---



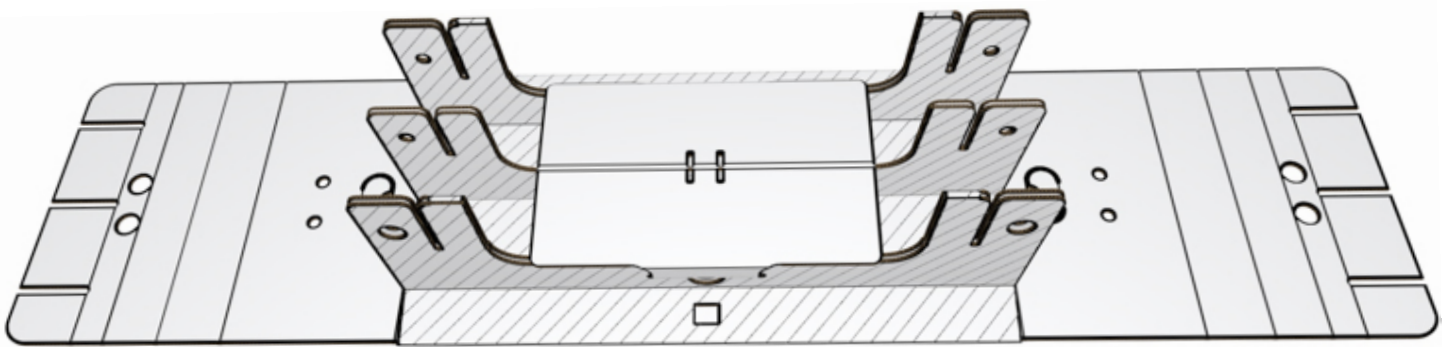
DESK UP

## INSTRUCTIONS



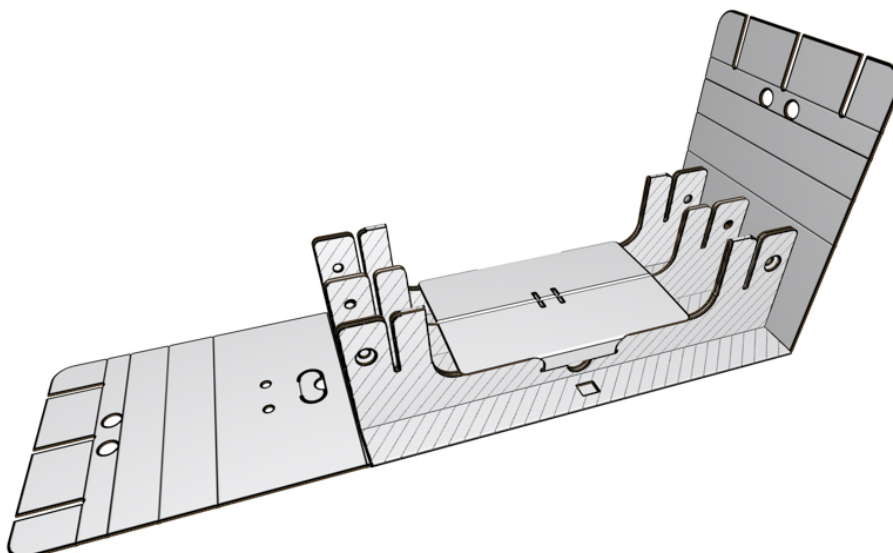
7. Rotate the desk such that the length is facing you

---



8. Open out the flaps from below the desk by lifting it.

---



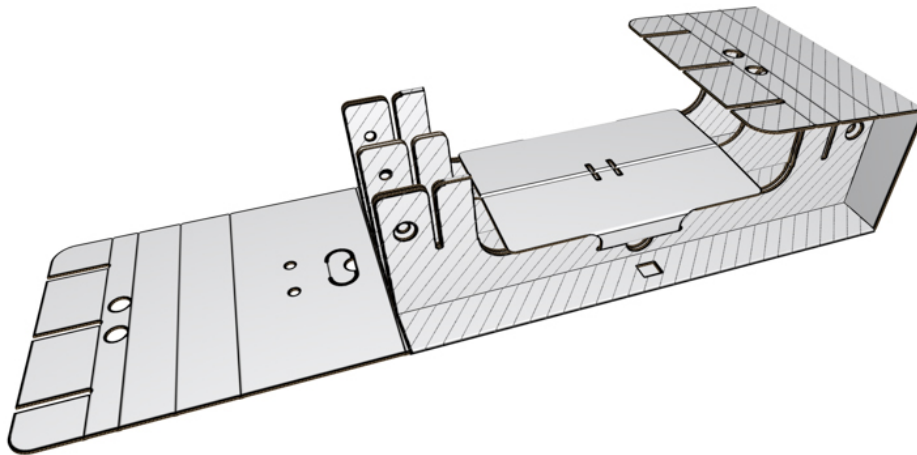
9. Step 10: let's start with the right flap. Fold it at A1 at 90 degrees

---



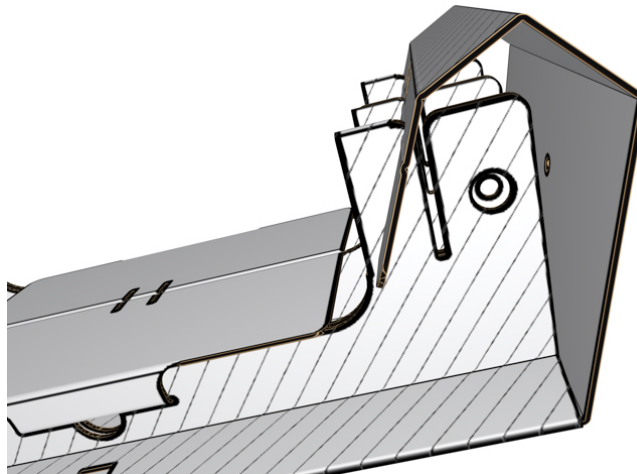
DESK UP

# INSTRUCTIONS



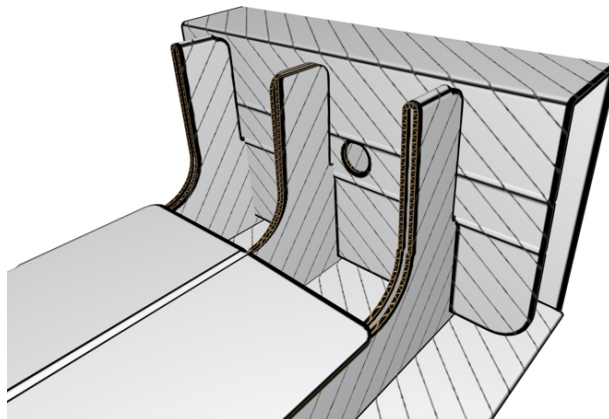
10. Fold A2 at 90 degrees.

---



11: Insert slits from A4 into slits of flaps 1,2 and 3.

---



12: press down on flap A so that the slits go inside the slits on flap 1,2 &3. Make sure that the slits are aligned while inserting. Keep going till the area between A2 and A3 is flat and you can see though the two holes on flap A to the other side.

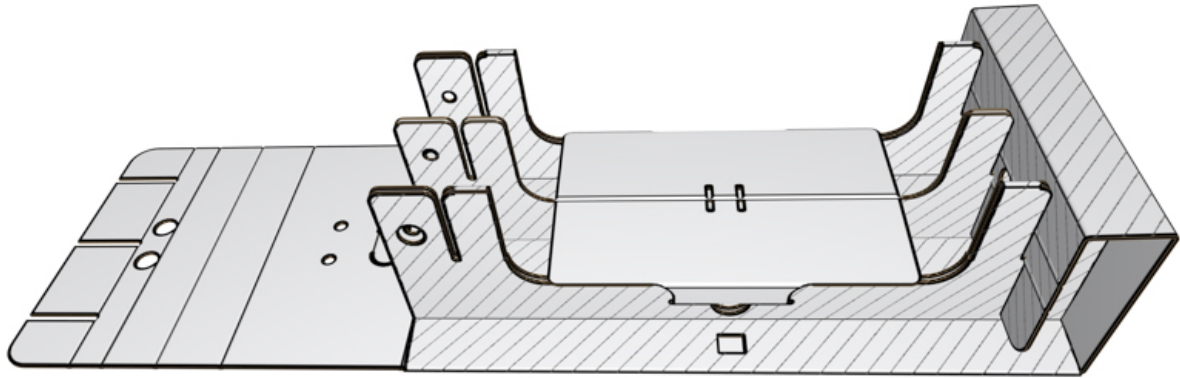
---





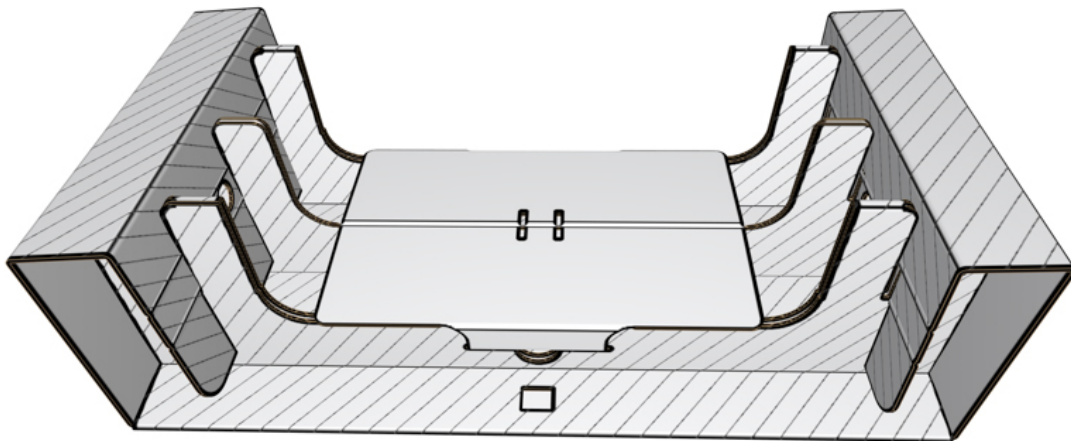
DESK UP

## INSTRUCTIONS



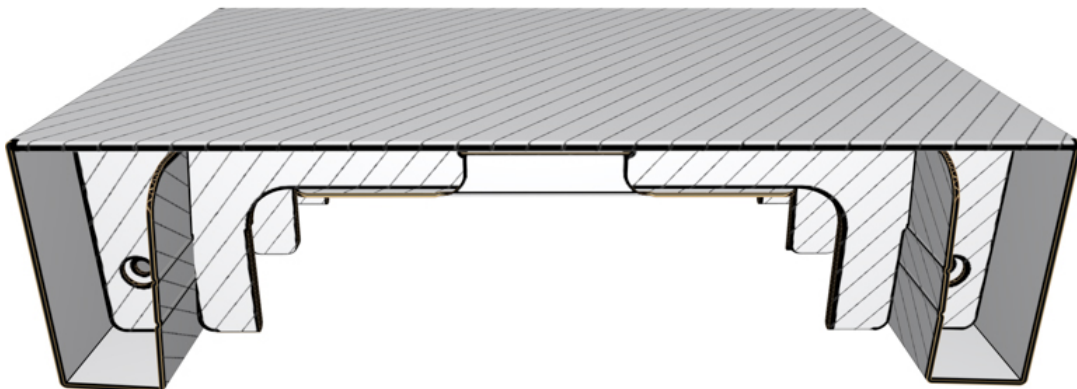
13: Repeat for flap B

---



14: DeskUp with both flaps completed

---



15: Voila your Deskup is ready for use. Turn over and enjoy!!!

---